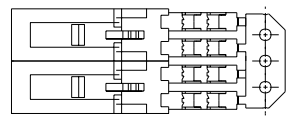
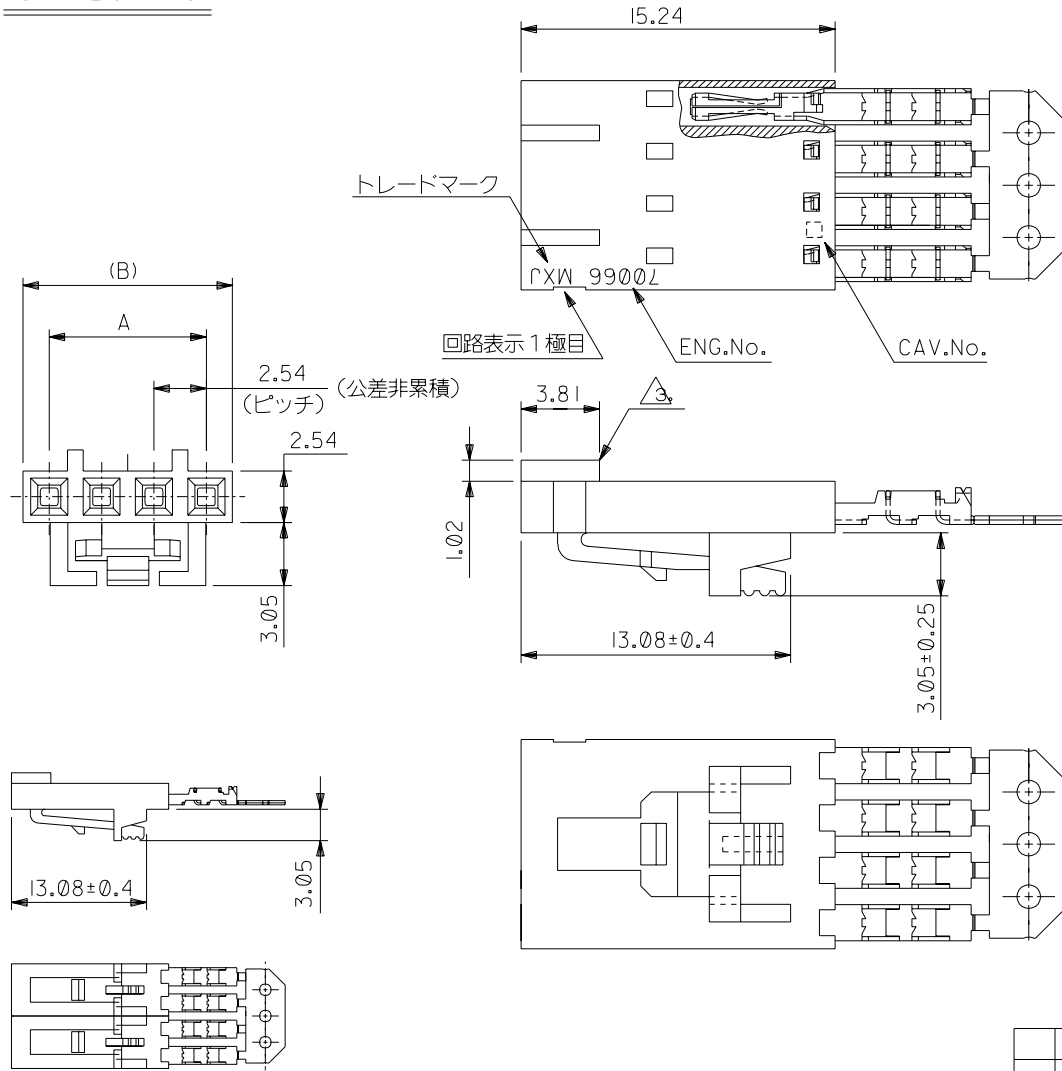


ENG. NO.  
SD-70400-06\*\*

EDP NO. #

ALL DIMENSIONS IN METRIC DO NOT SCALE DRAWING

OPTION G



2 極の場合  
(SCALE:2-1)

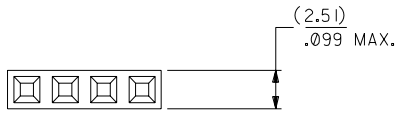
注記:

- 材料  
ハウジング: ガラス入りポリエステル UL 94V-0  
ターミナル: 燐青銅
- 仕上げ  
接点部: 金メッキ 0.38 μm MIN.  
圧接部: 錫メッキ 1.91 μm MIN.  
下地メッキ: ニッケルメッキ 1.27 μm MIN.
- 極性リブは、2 極及び 3 極の場合 1 箇所のみとする。  
但し 3 極の場合のリブは、1 極目と 2 極目の間とする。
- 適合オスコネクター: 70107-\*\*\*\*, 70018-\*\*\*\*
- 適合ヘッダー: 70389-\*\*\*\*, 70391-\*\*\*\*
- ハウジングの色: 黒

63.50	60.96	70400-0689	25
60.96	58.42	-0688	24
58.42	55.88	-0687	23
55.88	53.34	-0686	22
53.34	50.80	-0685	21
50.80	48.26	-0684	20
48.26	45.72	-0683	19
45.72	43.18	-0682	18
43.18	40.64	-0681	17
40.64	38.10	-0680	16
38.10	35.56	-0679	15
35.56	33.02	-0678	14
33.02	30.48	-0677	13
30.48	27.94	-0676	12
27.94	25.40	-0675	11
25.40	22.86	-0674	10
22.86	20.32	-0673	9
20.32	17.78	-0672	8
17.78	15.24	-0671	7
15.24	12.70	-0670	6
12.70	10.16	-0669	5
10.16	7.62	-0668	4
7.62	5.08	-0667	3
5.08	2.54	70400-0666	2
(B)	A	MATERIAL No.	極数

材料 MATERIAL		MOLEX-JAPAN CO.,LTD. 日本モレックス株式会社	
注記参照		EDP. NO. #	
C 変更 (J2004-4519)	M.S. 04/05/31	ENG. NO. SD-70400-06**	
B 変更 (T20159)	S.M. H.I. 92/5/20	REV C	
A 変更 (T90267)	H.H. M.S. 89/9/8	TITLE 名称 (OPTION G) SL 2.54 SINGLE ROW ASSEMBLY, FEMALE I.D. CONN. -LEAD FREE-	
0 新規作成 (T80231)	T.F. M.S. 88/11/17	DRAWN BY 11/17/87 CHK'D BY T.FURUHATA M.SASAO	
記号 変更内容 REVISION RECORD	DR. 日付 DATE	APP'D BY S.YAMADA 尺度 SCALE 4-1	
一般公差 GENERAL TOLERANCES	REVISION RECORD	REVISION RECORD	

# OPTION A

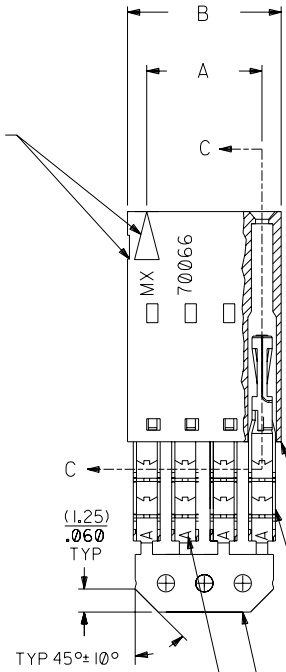


## NOTES:

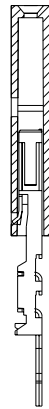
- 1) TO BE USED WITH (24) AWG. STRANDED WIRE WITH (1.35)/.053 DIA. MAX. INSULATION.
- 2) SEE CHART FOR CIRCUIT SIZES.
- 3) STANDARD PACKAGING PER PK-70873-0001. OPTIONAL PACKAGING MAY BE AVAILABLE, REQUEST DWG. PK-70400
- 4) PARTS STACKABLE END TO END AND SIDE BY SIDE ON (2.54)/.100 CENTERS.
- 5) REFER TO PRODUCT SPECIFICATION: PS-70400.
- 6) SEE DWG. SDA-70400-\*\*\*\* (SHT. 5) FOR OPTIONAL HOUSING DETAILS.
- 7) 4 CIRCUIT SHOWN.
- 8) TO MATE WITH MOLEX (2.54)/.100 CENTERLINE HEADERS.

9) 2 CIRCUIT ASSEMBLIES SUPPLIED AS GROUPED PAIRS.

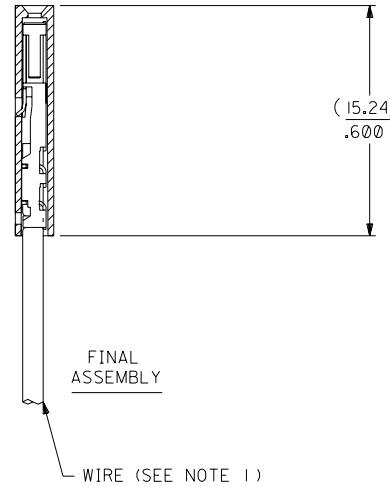
CIRCUIT NO. 1  
SLOT OR ARROW



## SECTION C-C



PRE-LOADED ASSEMBLY



FINAL ASSEMBLY

HOUSING PART NO. 70066-\*\*\*\*  
MATERIAL: G.F. POLYESTER, 94V-0

TERMINAL PART NO. 70028-\*\*\*\*  
MATERIAL: PHOSPHOR BRONZE  
PLATING PER ES-88-\*\*\*

15 GOLD - .000015 MIN. GOLD IN SELECT AREA WITH .000075 MIN. TIN IN SELECT AREA OVER .000050 MIN. NICKEL OVER-ALL.

\*THE PRIMARY SHIPPING CARTON WILL BE LABELED "COMPLIANT TO ROHS DIRECTIVE 2002/95/EC AND ELV ANNEX II OF DIRECTIVE 2000/53/EC". CARTONS WITHOUT THIS LABEL MAY CONTAIN PRODUCT WITH LEAD.

I.D. SLOT CODE TO WIRE GAUGE CHART	
I.D. SLOT CODE	WIRE GAUGE
A	24 AWG.

PLATING CODE (STRIPE ON CARRIER STRIP)	
PLATING	COLOR
15 GOLD	YELLOW

CKT. SIZE	DIMENSIONS (INCH)		EDP. NO.	ENG. NO.
	A	B		
2	( 2.54 ) .100	( 5.05 ) .199	14-56-2021	A-70400-0526
3	( 5.08 ) .200	( 7.59 ) .299	14-56-2031	A-70400-0527
4	( 7.62 ) .300	( 10.13 ) .399	14-56-2041	A-70400-0528
5	( 10.16 ) .400	( 12.67 ) .499	14-56-2051	A-70400-0529
6	( 12.70 ) .500	( 15.21 ) .599	14-56-2061	A-70400-0530
7	( 15.24 ) .600	( 17.75 ) .699	14-56-2071	A-70400-0531
8	( 17.78 ) .700	( 20.29 ) .799	14-56-2081	A-70400-0532
9	( 20.32 ) .800	( 22.83 ) .899	14-56-2091	A-70400-0533
10	( 22.86 ) .900	( 25.37 ) .999	14-56-2101	A-70400-0534
11	( 25.54 ) 1.000	( 27.91 ) 1.099	14-56-2111	A-70400-0535
12	( 27.94 ) 1.100	( 30.45 ) 1.199	14-56-2121	A-70400-0536
13	( 30.48 ) 1.200	( 32.99 ) 1.299	14-56-2131	A-70400-0537
14	( 33.02 ) 1.300	( 35.53 ) 1.399	14-56-2141	A-70400-0538
15	( 35.56 ) 1.400	( 38.07 ) 1.499	14-56-2151	A-70400-0539
16	( 38.01 ) 1.500	( 40.61 ) 1.599	14-56-2161	A-70400-0540
17	( 40.64 ) 1.600	( 43.15 ) 1.699	14-56-2171	A-70400-0541
18	( 43.18 ) 1.700	( 45.69 ) 1.799	14-56-2181	A-70400-0542
19	( 45.72 ) 1.800	( 48.23 ) 1.899	14-56-2191	A-70400-0543
20	( 48.26 ) 1.900	( 50.77 ) 1.999	14-56-2201	A-70400-0544
21	( 50.80 ) 2.000	( 53.31 ) 2.099	14-56-2211	A-70400-0545
22	( 53.34 ) 2.100	( 55.85 ) 2.199	14-56-2221	A-70400-0546
23	( 55.88 ) 2.200	( 58.39 ) 2.299	14-56-2231	A-70400-0547
24	( 58.42 ) 2.300	( 60.93 ) 2.399	14-56-2241	A-70400-0548
25	( 60.96 ) 2.400	( 63.47 ) 2.499	14-56-2251	A-70400-0549

REV. NO.	DATE	DESCRIPTION
E		REVISED PER ECR NO. U82110 10-17-88 AAB
D		REVISE PER ECR #U80110 2/3/88 MJM
C		REDRAWN ON CAD ECR# 8842 5/8/86 W.Z.
F		LEAD FREE UCP2004-1769 RWHITE 04/03/17
EI		ADD CARRIER CHAMF ECN #UDT1998-0280 05/20/98 LMCGRATH
LTR.		REVISIONS

DIMENSIONS SHOWN (METRIC) INCH	
UNLESS OTHERWISE SPECIFIED TOLERANCES: ANGULAR ± 1/2°	
3 PLACE	± .010
2 PLACE	± .014 ± 0.25
1 PLACE	± 0.35
DRAFT WHERE APPLICABLE MUST REMAIN WITHIN DIMENSIONS	
DRWG. BY: WAZ	CHK'D. BY: WAZ
APP'D. BY:	SCALE: 4:1

REVISIONS		MFG. SH. REV.	
TITLE: ASSEMBLY, SL CONNECTOR (SINGLE ROW- (2.54)/.100 GRID)		REVISE ONLY ON CAD SYSTEM	
MOLEX INCORPORATED LITSE, ILL. 60532 U.S.A.		SHEET NO. 10/09/84	DATE
PART NO. SDA-70400-0526-0549		DRWG. NO.	
SEE CHART		FILE NAME: S70400AX4	DIV. DA
THIS DRAWING CONTAINS INFORMATION THAT IS PROPRIETARY TO MOLEX INC. AND SHOULD NOT BE USED WITHOUT WRITTEN PERMISSION.			